



THE BEACH HOUSE  
At Al Marjan

Floorplans

A modern, minimalist bedroom with a large bed, a curved sofa, and floor-to-ceiling windows overlooking a waterfront city skyline. The room features a neutral color palette of beige, white, and light grey. The bed is dressed in white linens with a patterned throw. A curved, light-colored sofa is positioned near the windows. The floor is made of large, light-colored tiles. The ceiling has recessed lighting. The wall behind the bed has a decorative pattern of small, circular elements. The windows provide a view of a body of water and a city skyline in the distance.

# Level 1



**UPPER FLOOR**

**LOWER FLOOR**

**UNIT - 101**  
**2 BEDROOM+MAID**  
**LEVEL-01**

Internal Living Area	1449.04 sq.ft.
Outdoor Living Area	143.16 sq.ft.
<b>Total Living Area</b>	<b>1592.20 sq.ft.</b>



**DISCLAIMER:**

All measurements are indicative and are for marketing purposes only. All efforts have been made to ensure their accuracy, however these layouts are subject to change at the discretion of the developer and should not be relied upon as final. The actual area may vary from the stated area and the developer reserves the right to make the revisions/alterations, at its absolute discretion, without any liability whatsoever



**UPPER FLOOR**



**UNIT - 102**

**1 BEDROOM**

**LEVEL-01**

Internal Living Area	837.43 sq.ft.
Outdoor Living Area	89.34 sq.ft.
<b>Total Living Area</b>	<b>926.77 sq.ft.</b>



**LOWER FLOOR**

**DISCLAIMER:**

All measurements are indicative and are for marketing purposes only. All efforts have been made to ensure their accuracy, however these layouts are subject to change at the discretion of the developer and should not be relied upon as final. The actual area may vary from the stated area and the developer reserves the right to make the revisions/alterations, at its absolute discretion, without any liability whatsoever



**UNIT - 103**

**3 BEDROOM**

**LEVEL-01**

Internal Living Area	1746.01 sq.ft.
Outdoor Living Area	270.50 sq.ft.
<b>Total Living Area</b>	<b>2016.51 sq.ft.</b>



**DISCLAIMER:**

All measurements are indicative and are for marketing purposes only. All efforts have been made to ensure their accuracy, however these layouts are subject to change at the discretion of the developer and should not be relied upon as final. The actual area may vary from the stated area and the developer reserves the right to make the revisions/alterations, at its absolute discretion, without any liability whatsoever



**UNIT - 104**  
**3 BEDROOM**  
**LEVEL-01**

Internal Living Area	1559.37 sq.ft.
Outdoor Living Area	281.91 sq.ft.
<b>Total Living Area</b>	<b>1841.27 sq.ft.</b>



**DISCLAIMER:**

All measurements are indicative and are for marketing purposes only. All efforts have been made to ensure their accuracy, however these layouts are subject to change at the discretion of the developer and should not be relied upon as final. The actual area may vary from the stated area and the developer reserves the right to make the revisions/alterations, at its absolute discretion, without any liability whatsoever



UPPER FLOOR



**UNIT - 105**  
**2 BEDROOM**  
LEVEL-01

---

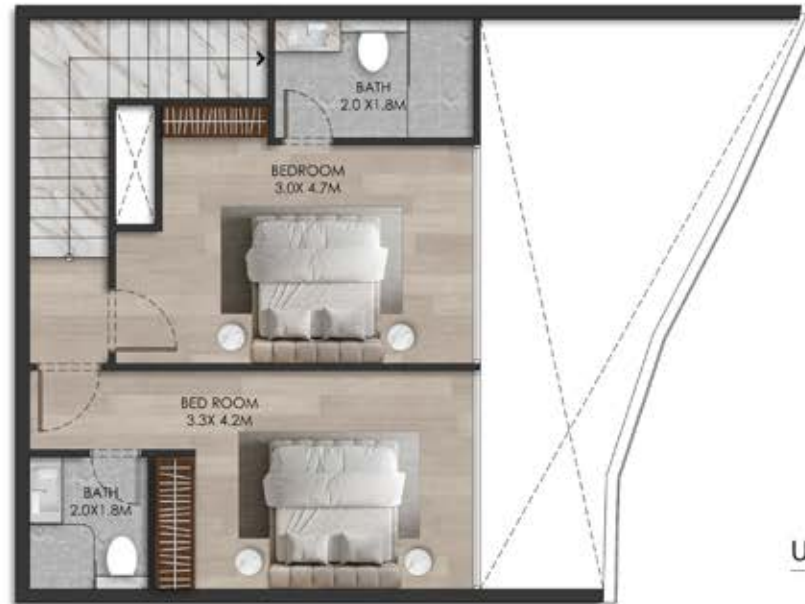
Internal Living Area	1763.88 sq.ft.
Outdoor Living Area	244.02 sq.ft.
<b>Total Living Area</b>	<b>2007.90 sq.ft.</b>



LOWER FLOOR

**DISCLAIMER:**

All measurements are indicative and are for marketing purposes only. All efforts have been made to ensure their accuracy, however these layouts are subject to change at the discretion of the developer and should not be relied upon as final. The actual area may vary from the stated area and the developer reserves the right to make the revisions/alterations, at its absolute discretion, without any liability whatsoever



**UNIT - 106**  
2 BEDROOM+MAID  
LEVEL-01

Internal Living Area	1589.61 sq.ft.
Outdoor Living Area	276.42 sq.ft.
<b>Total Living Area</b>	<b>1866.03 sq.ft.</b>



**DISCLAIMER:**

All measurements are indicative and are for marketing purposes only. All efforts have been made to ensure their accuracy, however these layouts are subject to change at the discretion of the developer and should not be relied upon as final. The actual area may vary from the stated area and the developer reserves the right to make the revisions/alterations, at its absolute discretion, without any liability whatsoever

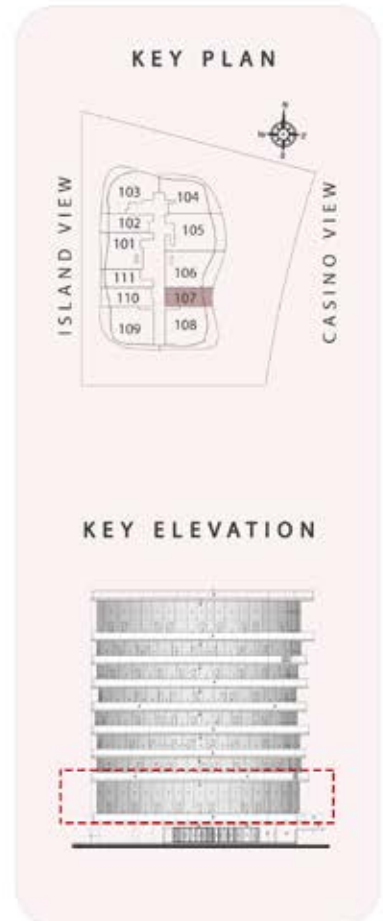




**THE BEACH HOUSE**  
At Al Marjan



UPPER FLOOR



**UNIT - 107**  
**1 BEDROOM**  
**LEVEL-01**

Internal Living Area	767.04 sq.ft.
Outdoor Living Area	103.55 sq.ft.
<b>Total Living Area</b>	<b>870.59 sq.ft.</b>



LOWER FLOOR

**DISCLAIMER:**

All measurements are indicative and are for marketing purposes only. All efforts have been made to ensure their accuracy, however these layouts are subject to change at the discretion of the developer and should not be relied upon as final. The actual area may vary from the stated area and the developer reserves the right to make the revisions/alterations, at its absolute discretion, without any liability whatsoever



UPPER FLOOR



**UNIT - 108**  
**3 BEDROOM**  
LEVEL-01

Internal Living Area	1727.72 sq.ft.
Outdoor Living Area	378.57 sq.ft.
<b>Total Living Area</b>	<b>2106.28 sq.ft.</b>



LOWER FLOOR

**DISCLAIMER:**

All measurements are indicative and are for marketing purposes only. All efforts have been made to ensure their accuracy, however these layouts are subject to change at the discretion of the developer and should not be relied upon as final. The actual area may vary from the stated area and the developer reserves the right to make the revisions/alterations, at its absolute discretion, without any liability whatsoever



**UNIT - 109**

**3 BEDROOM**

**LEVEL-01**

Internal Living Area	1721.90 sq.ft.
Outdoor Living Area	307.42 sq.ft.
<b>Total Living Area</b>	<b>2029.32 sq.ft.</b>



**DISCLAIMER:**

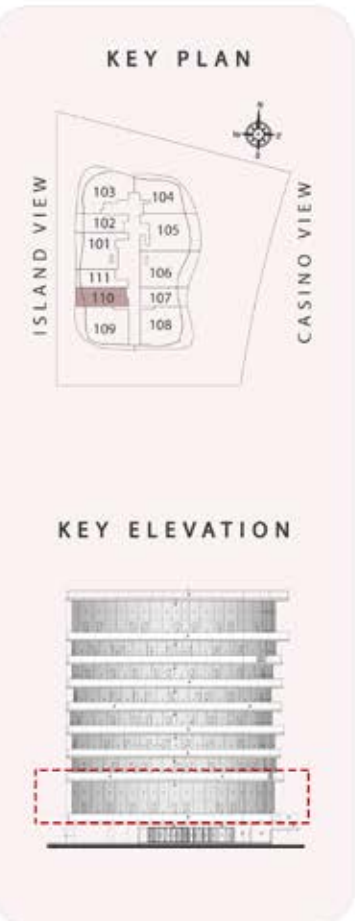
All measurements are indicative and are for marketing purposes only. All efforts have been made to ensure their accuracy, however these layouts are subject to change at the discretion of the developer and should not be relied upon as final. The actual area may vary from the stated area and the developer reserves the right to make the revisions/alterations, at its absolute discretion, without any liability whatsoever



**THE BEACH HOUSE**  
At Al Marjan



UPPER FLOOR



**UNIT - 110**

**1 BEDROOM**

LEVEL-01

Internal Living Area	852.72 sq.ft.
Outdoor Living Area	83.10 sq.ft.
<b>Total Living Area</b>	<b>935.81 sq.ft.</b>



LOWER FLOOR

**DISCLAIMER:**

All measurements are indicative and are for marketing purposes only. All efforts have been made to ensure their accuracy, however these layouts are subject to change at the discretion of the developer and should not be relied upon as final. The actual area may vary from the stated area and the developer reserves the right to make the revisions/alterations, at its absolute discretion, without any liability whatsoever.



**THE BEACH HOUSE**  
At Al Marjan



UPPER FLOOR



**UNIT - 111**

**1 BEDROOM**

**LEVEL-01**

Internal Living Area	820.32 sq.ft.
Outdoor Living Area	46.07 sq.ft.
<b>Total Living Area</b>	<b>866.39 sq.ft.</b>



LOWER FLOOR

**DISCLAIMER:**

All measurements are indicative and are for marketing purposes only. All efforts have been made to ensure their accuracy, however these layouts are subject to change at the discretion of the developer and should not be relied upon as final. The actual area may vary from the stated area and the developer reserves the right to make the revisions/alterations, at its absolute discretion, without any liability whatsoever.

A modern, minimalist bedroom with a large bed, a round armchair, and a large window overlooking a body of water and a city skyline. The room features a neutral color palette of beige, white, and light brown. The bed is dressed in white linens with a patterned throw. A round, tufted armchair sits near the window. The floor is covered in a large, textured rug. The ceiling has recessed lighting. The wall behind the bed has a decorative pattern of small, circular elements. The window provides a view of a body of water and a city skyline in the distance.

# Level 3

**UNIT - 301**

STUDIO

LEVEL-03

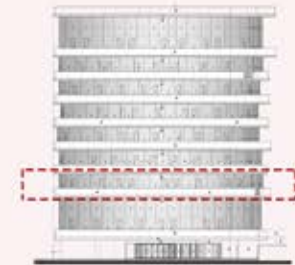
Internal Living Area	468.77 sq.ft.
Outdoor Living Area	61.78 sq.ft.
<b>Total Living Area</b>	<b>530.55 sq.ft.</b>



**KEY PLAN**



**KEY ELEVATION**



**DISCLAIMER:**

All measurements are indicative and are for marketing purposes only. All efforts have been made to ensure their accuracy, however these layouts are subject to change at the discretion of the developer and should not be relied upon as final. The actual area may vary from the stated area and the developer reserves the right to make the revisions/alterations, at its absolute discretion, without any liability whatsoever



**UNIT - 302**

STUDIO

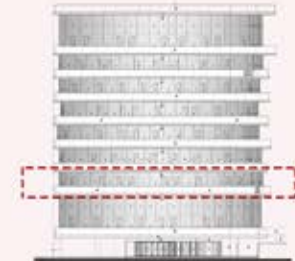
LEVEL-03

Internal Living Area	511.72 sq.ft.
Outdoor Living Area	49.08 sq.ft.
<b>Total Living Area</b>	<b>560.80 sq.ft.</b>

**KEY PLAN**



**KEY ELEVATION**



**DISCLAIMER:**

All measurements are indicative and are for marketing purposes only. All efforts have been made to ensure their accuracy, however these layouts are subject to change at the discretion of the developer and should not be relied upon as final. The actual area may vary from the stated area and the developer reserves the right to make the revisions/alterations, at its absolute discretion, without any liability whatsoever





**THE BEACH HOUSE**  
At Al Marjan



### UNIT - 303

1 BEDROOM

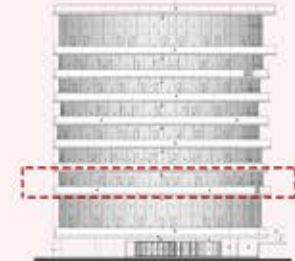
LEVEL-03

Internal Living Area	1162.93 sq.ft.
Outdoor Living Area	300.42 sq.ft.
<b>Total Living Area</b>	<b>1463.35 sq.ft.</b>

### KEY PLAN



### KEY ELEVATION



### DISCLAIMER:

All measurements are indicative and are for marketing purposes only. All efforts have been made to ensure their accuracy, however these layouts are subject to change at the discretion of the developer and should not be relied upon as final. The actual area may vary from the stated area and the developer reserves the right to make the revisions/alterations, at its absolute discretion, without any liability whatsoever



**THE BEACH HOUSE**  
At Al Marjan



### UNIT - 304

2 BEDROOM

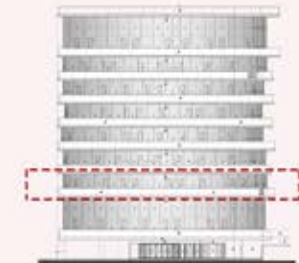
LEVEL-03

Internal Living Area	1539.13 sq.ft.
Outdoor Living Area	241.87 sq.ft.
Total Living Area	1781.00 sq.ft.

### KEY PLAN



### KEY ELEVATION



#### DISCLAIMER:

All measurements are indicative and are for marketing purposes only. All efforts have been made to ensure their accuracy, however these layouts are subject to change at the discretion of the developer and should not be relied upon as final. The actual area may vary from the stated area and the developer reserves the right to make the revisions/alterations, at its absolute discretion, without any liability whatsoever



### UNIT - 305

STUDIO

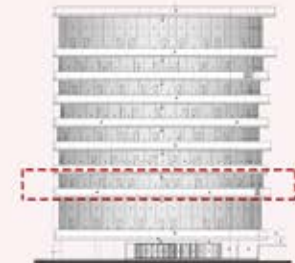
LEVEL-03

Internal Living Area	582.11 sq.ft.
Outdoor Living Area	59.42 sq.ft.
<b>Total Living Area</b>	<b>641.53 sq.ft.</b>

### KEY PLAN



### KEY ELEVATION



#### DISCLAIMER:

All measurements are indicative and are for marketing purposes only. All efforts have been made to ensure their accuracy, however these layouts are subject to change at the discretion of the developer and should not be relied upon as final. The actual area may vary from the stated area and the developer reserves the right to make the revisions/alterations, at its absolute discretion, without any liability whatsoever



**THE BEACH HOUSE**  
At Al Marjan



### UNIT - 306

1 BEDROOM

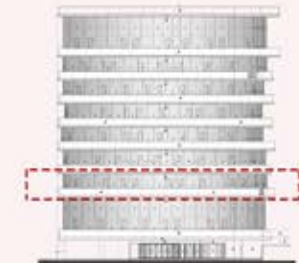
LEVEL-03

Internal Living Area	1156.58 sq.ft.
Outdoor Living Area	199.99 sq.ft.
<b>Total Living Area</b>	<b>1356.58 sq.ft.</b>

### KEY PLAN



### KEY ELEVATION



#### DISCLAIMER:

All measurements are indicative and are for marketing purposes only. All efforts have been made to ensure their accuracy, however these layouts are subject to change at the discretion of the developer and should not be relied upon as final. The actual area may vary from the stated area and the developer reserves the right to make the revisions/alterations, at its absolute discretion, without any liability whatsoever

**UNIT - 307**

STUDIO

LEVEL-03

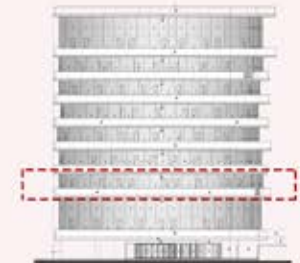
Internal Living Area	577.70 sq.ft.
Outdoor Living Area	63.29 sq.ft.
<b>Total Living Area</b>	<b>640.99 sq.ft.</b>



**KEY PLAN**



**KEY ELEVATION**



**DISCLAIMER:**

All measurements are indicative and are for marketing purposes only. All efforts have been made to ensure their accuracy, however these layouts are subject to change at the discretion of the developer and should not be relied upon as final. The actual area may vary from the stated area and the developer reserves the right to make the revisions/alterations, at its absolute discretion, without any liability whatsoever



**THE BEACH HOUSE**  
At Al Marjan



### UNIT - 308

1 BEDROOM

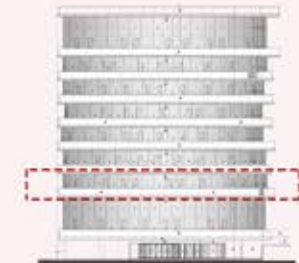
LEVEL-03

Internal Living Area	1143.23 sq.ft.
Outdoor Living Area	344.77 sq.ft.
<b>Total Living Area</b>	<b>1488.00 sq.ft.</b>

### KEY PLAN



### KEY ELEVATION



### DISCLAIMER:

All measurements are indicative and are for marketing purposes only. All efforts have been made to ensure their accuracy, however these layouts are subject to change at the discretion of the developer and should not be relied upon as final. The actual area may vary from the stated area and the developer reserves the right to make the revisions/alterations, at its absolute discretion, without any liability whatsoever



**THE BEACH HOUSE**  
At Al Marjan



### UNIT - 309

1 BEDROOM

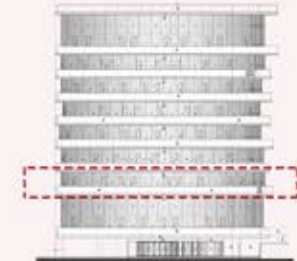
LEVEL-03

Internal Living Area	1065.41 sq.ft.
Outdoor Living Area	244.45 sq.ft.
<b>Total Living Area</b>	<b>1309.86 sq.ft.</b>

### KEY PLAN



### KEY ELEVATION



### DISCLAIMER:

All measurements are indicative and are for marketing purposes only. All efforts have been made to ensure their accuracy, however these layouts are subject to change at the discretion of the developer and should not be relied upon as final. The actual area may vary from the stated area and the developer reserves the right to make the revisions/alterations, at its absolute discretion, without any liability whatsoever



**THE BEACH HOUSE**  
At Al Marjan



### UNIT - 310

STUDIO

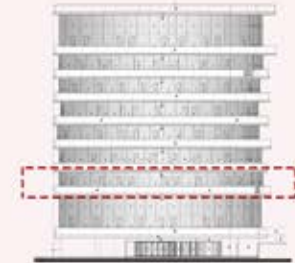
LEVEL-03

Internal Living Area	545.51 sq.ft.
Outdoor Living Area	45.32 sq.ft.
<b>Total Living Area</b>	<b>590.83 sq.ft.</b>

### KEY PLAN



### KEY ELEVATION



#### DISCLAIMER:

All measurements are indicative and are for marketing purposes only. All efforts have been made to ensure their accuracy, however these layouts are subject to change at the discretion of the developer and should not be relied upon as final. The actual area may vary from the stated area and the developer reserves the right to make the revisions/alterations, at its absolute discretion, without any liability whatsoever





**THE BEACH HOUSE**  
At Al Marjan



### UNIT - 311

1 BEDROOM

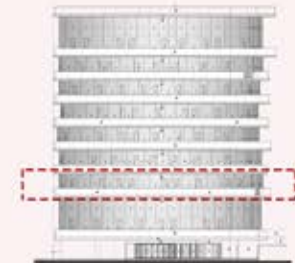
LEVEL-03

Internal Living Area	888.56 sq.ft.
Outdoor Living Area	100.32 sq.ft.
<b>Total Living Area</b>	<b>988.88 sq.ft.</b>

### KEY PLAN



### KEY ELEVATION



#### DISCLAIMER:

All measurements are indicative and are for marketing purposes only. All efforts have been made to ensure their accuracy, however these layouts are subject to change at the discretion of the developer and should not be relied upon as final. The actual area may vary from the stated area and the developer reserves the right to make the revisions/alterations, at its absolute discretion, without any liability whatsoever



# Level 4



**THE BEACH HOUSE**  
At Al Marjan



### UNIT - 401

STUDIO

LEVEL-04

Internal Living Area	453.91 sq.ft.
Outdoor Living Area	73.84 sq.ft.
<b>Total Living Area</b>	<b>527.75 sq.ft.</b>

### KEY PLAN



### KEY ELEVATION



#### DISCLAIMER:

All measurements are indicative and are for marketing purposes only. All efforts have been made to ensure their accuracy, however these layouts are subject to change at the discretion of the developer and should not be relied upon as final. The actual area may vary from the stated area and the developer reserves the right to make the revisions/alterations, at its absolute discretion, without any liability whatsoever



**THE BEACH HOUSE**  
At Al Marjan



### UNIT - 402

STUDIO

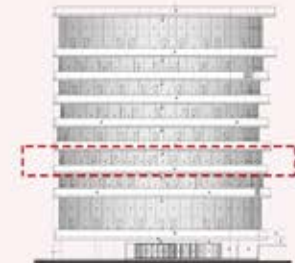
LEVEL-04

Internal Living Area	466.08 sq.ft.
Outdoor Living Area	98.60 sq.ft.
<b>Total Living Area</b>	<b>564.67 sq.ft.</b>

### KEY PLAN



### KEY ELEVATION



#### DISCLAIMER:

All measurements are indicative and are for marketing purposes only. All efforts have been made to ensure their accuracy, however these layouts are subject to change at the discretion of the developer and should not be relied upon as final. The actual area may vary from the stated area and the developer reserves the right to make the revisions/alterations, at its absolute discretion, without any liability whatsoever



**THE BEACH HOUSE**  
At Al Marjan



### UNIT - 403

1 BEDROOM

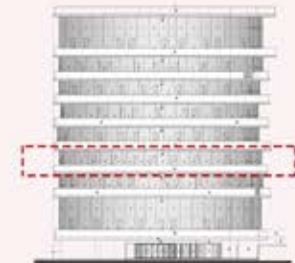
LEVEL-04

Internal Living Area	885.33 sq.ft.
Outdoor Living Area	435.08 sq.ft.
<b>Total Living Area</b>	<b>1320.41 sq.ft.</b>

### KEY PLAN



### KEY ELEVATION



#### DISCLAIMER:

All measurements are indicative and are for marketing purposes only. All efforts have been made to ensure their accuracy, however these layouts are subject to change at the discretion of the developer and should not be relied upon as final. The actual area may vary from the stated area and the developer reserves the right to make the revisions/alterations, at its absolute discretion, without any liability whatsoever



**THE BEACH HOUSE**  
At Al Marjan



### UNIT - 404

2 BEDROOM

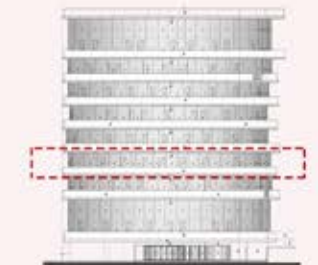
LEVEL-04

Internal Living Area	1390.27 sq.ft.
Outdoor Living Area	450.15 sq.ft.
Total Living Area	1840.41 sq.ft.

### KEY PLAN



### KEY ELEVATION



### DISCLAIMER:

All measurements are indicative and are for marketing purposes only. All efforts have been made to ensure their accuracy, however these layouts are subject to change at the discretion of the developer and should not be relied upon as final. The actual area may vary from the stated area and the developer reserves the right to make the revisions/alterations, at its absolute discretion, without any liability whatsoever



**UNIT - 405**

STUDIO

LEVEL-04

Internal Living Area	461.88 sq.ft.
Outdoor Living Area	205.27 sq.ft.
<b>Total Living Area</b>	<b>667.15 sq.ft.</b>

**KEY PLAN**



**KEY ELEVATION**



**DISCLAIMER:**

All measurements are indicative and are for marketing purposes only. All efforts have been made to ensure their accuracy, however these layouts are subject to change at the discretion of the developer and should not be relied upon as final. The actual area may vary from the stated area and the developer reserves the right to make the revisions/alterations, at its absolute discretion, without any liability whatsoever



**THE BEACH HOUSE**  
At Al Marjan



### UNIT - 406

1 BEDROOM

LEVEL-04

Internal Living Area	938.40 sq.ft.
Outdoor Living Area	292.02 sq.ft.
<b>Total Living Area</b>	<b>1230.42 sq.ft.</b>

### KEY PLAN



### KEY ELEVATION



#### DISCLAIMER:

All measurements are indicative and are for marketing purposes only. All efforts have been made to ensure their accuracy, however these layouts are subject to change at the discretion of the developer and should not be relied upon as final. The actual area may vary from the stated area and the developer reserves the right to make the revisions/alterations, at its absolute discretion, without any liability whatsoever





**THE BEACH HOUSE**  
At Al Marjan



### UNIT - 407

STUDIO

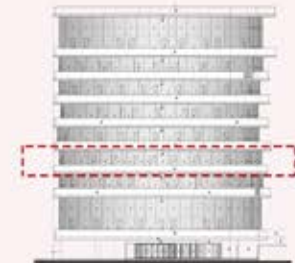
LEVEL-04

Internal Living Area	443.47 sq.ft.
Outdoor Living Area	141.33 sq.ft.
<b>Total Living Area</b>	<b>584.80 sq.ft.</b>

### KEY PLAN



### KEY ELEVATION



#### DISCLAIMER:

All measurements are indicative and are for marketing purposes only. All efforts have been made to ensure their accuracy, however these layouts are subject to change at the discretion of the developer and should not be relied upon as final. The actual area may vary from the stated area and the developer reserves the right to make the revisions/alterations, at its absolute discretion, without any liability whatsoever



**THE BEACH HOUSE**  
At Al Marjan



### UNIT - 408

1 BEDROOM

LEVEL-04

Internal Living Area	934.52 sq.ft.
Outdoor Living Area	423.13 sq.ft.
Total Living Area	1357.65 sq.ft.

### KEY PLAN



### KEY ELEVATION



### DISCLAIMER:

All measurements are indicative and are for marketing purposes only. All efforts have been made to ensure their accuracy, however these layouts are subject to change at the discretion of the developer and should not be relied upon as final. The actual area may vary from the stated area and the developer reserves the right to make the revisions/alterations, at its absolute discretion, without any liability whatsoever



**THE BEACH HOUSE**  
At Al Marjan



### UNIT- 409

1 BEDROOM

LEVEL-04

Internal Living Area	1050.34 sq.ft.
Outdoor Living Area	181.05 sq.ft.
<b>Total Living Area</b>	<b>1231.39 sq.ft.</b>

### KEY PLAN



### KEY ELEVATION



#### DISCLAIMER:

All measurements are indicative and are for marketing purposes only. All efforts have been made to ensure their accuracy, however these layouts are subject to change at the discretion of the developer and should not be relied upon as final. The actual area may vary from the stated area and the developer reserves the right to make the revisions/alterations, at its absolute discretion, without any liability whatsoever.



**THE BEACH HOUSE**  
At Al Marjan



### UNIT - 410

STUDIO

LEVEL-04

Internal Living Area	529.91 sq.ft.
Outdoor Living Area	59.74 sq.ft.
Total Living Area	589.65 sq.ft.

### KEY PLAN



### KEY ELEVATION



#### DISCLAIMER:

All measurements are indicative and are for marketing purposes only. All efforts have been made to ensure their accuracy, however these layouts are subject to change at the discretion of the developer and should not be relied upon as final. The actual area may vary from the stated area and the developer reserves the right to make the revisions/alterations, at its absolute discretion, without any liability whatsoever.



**THE BEACH HOUSE**  
At Al Marjan



### UNIT- 411

1 BEDROOM

LEVEL-04

Internal Living Area	881.67 sq.ft.
Outdoor Living Area	102.47 sq.ft.
<b>Total Living Area</b>	<b>984.14 sq.ft.</b>

### KEY PLAN



### KEY ELEVATION



#### DISCLAIMER:

All measurements are indicative and are for marketing purposes only. All efforts have been made to ensure their accuracy, however these layouts are subject to change at the discretion of the developer and should not be relied upon as final. The actual area may vary from the stated area and the developer reserves the right to make the revisions/alterations, at its absolute discretion, without any liability whatsoever.



Level 5

**UNIT - 501**

STUDIO

LEVEL-05

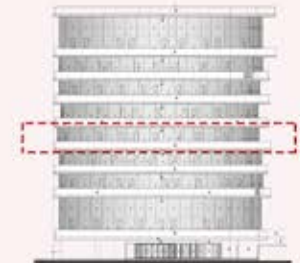
Internal Living Area	459.30 sq.ft.
Outdoor Living Area	50.48 sq.ft.
<b>Total Living Area</b>	<b>509.78 sq.ft.</b>



**KEY PLAN**



**KEY ELEVATION**



**DISCLAIMER:**

All measurements are indicative and are for marketing purposes only. All efforts have been made to ensure their accuracy, however these layouts are subject to change at the discretion of the developer and should not be relied upon as final. The actual area may vary from the stated area and the developer reserves the right to make the revisions/alterations, at its absolute discretion, without any liability whatsoever



**THE BEACH HOUSE**  
At Al Marjan



### UNIT - 502

STUDIO

LEVEL-05

Internal Living Area	488.90 sq.ft.
Outdoor Living Area	70.40 sq.ft.
<b>Total Living Area</b>	<b>559.29 sq.ft.</b>

### KEY PLAN



### KEY ELEVATION



#### DISCLAIMER:

All measurements are indicative and are for marketing purposes only. All efforts have been made to ensure their accuracy, however these layouts are subject to change at the discretion of the developer and should not be relied upon as final. The actual area may vary from the stated area and the developer reserves the right to make the revisions/alterations, at its absolute discretion, without any liability whatsoever





**THE BEACH HOUSE**  
At Al Marjan



### UNIT - 503

1 BEDROOM

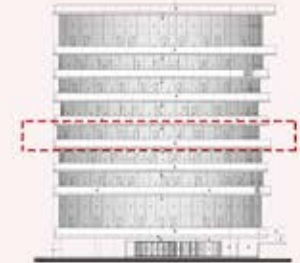
LEVEL-05

Internal Living Area	1016.87 sq.ft.
Outdoor Living Area	448.86 sq.ft.
<b>Total Living Area</b>	<b>1465.72 sq.ft.</b>

### KEY PLAN



### KEY ELEVATION



#### DISCLAIMER:

All measurements are indicative and are for marketing purposes only. All efforts have been made to ensure their accuracy, however these layouts are subject to change at the discretion of the developer and should not be relied upon as final. The actual area may vary from the stated area and the developer reserves the right to make the revisions/alterations, at its absolute discretion, without any liability whatsoever



**THE BEACH HOUSE**  
At Al Marjan



### UNIT - 504

2 BEDROOM

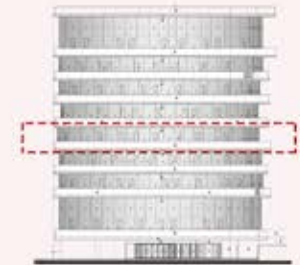
LEVEL-05

Internal Living Area	1491.34 sq.ft.
Outdoor Living Area	364.25 sq.ft.
<b>Total Living Area</b>	<b>1855.59 sq.ft.</b>

### KEY PLAN



### KEY ELEVATION



#### DISCLAIMER:

All measurements are indicative and are for marketing purposes only. All efforts have been made to ensure their accuracy, however these layouts are subject to change at the discretion of the developer and should not be relied upon as final. The actual area may vary from the stated area and the developer reserves the right to make the revisions/alterations, at its absolute discretion, without any liability whatsoever

**UNIT - 505**

STUDIO

LEVEL-05

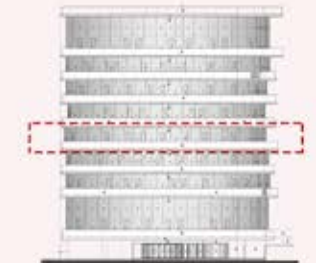
Internal Living Area	500.09 sq.ft.
Outdoor Living Area	106.78 sq.ft.
<b>Total Living Area</b>	<b>606.87 sq.ft.</b>



**KEY PLAN**



**KEY ELEVATION**



**DISCLAIMER:**

All measurements are indicative and are for marketing purposes only. All efforts have been made to ensure their accuracy, however these layouts are subject to change at the discretion of the developer and should not be relied upon as final. The actual area may vary from the stated area and the developer reserves the right to make the revisions/alterations, at its absolute discretion, without any liability whatsoever



**THE BEACH HOUSE**  
At Al Marjan



### UNIT - 506

1 BEDROOM

LEVEL-05

Internal Living Area	1117.19 sq.ft.
Outdoor Living Area	198.06 sq.ft.
<b>Total Living Area</b>	<b>1315.24 sq.ft.</b>

### KEY PLAN



### KEY ELEVATION



#### DISCLAIMER:

All measurements are indicative and are for marketing purposes only. All efforts have been made to ensure their accuracy, however these layouts are subject to change at the discretion of the developer and should not be relied upon as final. The actual area may vary from the stated area and the developer reserves the right to make the revisions/alterations, at its absolute discretion, without any liability whatsoever



### UNIT - 507

STUDIO

LEVEL-05

Internal Living Area	538.84 sq.ft.
Outdoor Living Area	74.49 sq.ft.
<b>Total Living Area</b>	<b>613.33 sq.ft.</b>

### KEY PLAN



### KEY ELEVATION



#### DISCLAIMER:

All measurements are indicative and are for marketing purposes only. All efforts have been made to ensure their accuracy, however these layouts are subject to change at the discretion of the developer and should not be relied upon as final. The actual area may vary from the stated area and the developer reserves the right to make the revisions/alterations, at its absolute discretion, without any liability whatsoever



**THE BEACH HOUSE**  
At Al Marjan



### UNIT - 508

1 BEDROOM

LEVEL-05

Internal Living Area	1121.06 sq.ft.
Outdoor Living Area	376.52 sq.ft.
Total Living Area	1497.58 sq.ft.

### KEY PLAN



### KEY ELEVATION



#### DISCLAIMER:

All measurements are indicative and are for marketing purposes only. All efforts have been made to ensure their accuracy, however these layouts are subject to change at the discretion of the developer and should not be relied upon as final. The actual area may vary from the stated area and the developer reserves the right to make the revisions/alterations, at its absolute discretion, without any liability whatsoever



**THE BEACH HOUSE**  
At Al Marjan



### UNIT- 509

1 BEDROOM

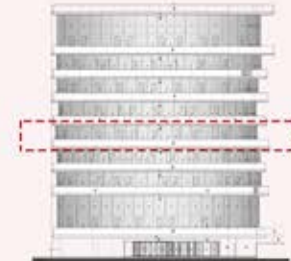
LEVEL-05

Internal Living Area	1051.85 sq.ft.
Outdoor Living Area	186.43 sq.ft.
<b>Total Living Area</b>	<b>1238.28 sq.ft.</b>

### KEY PLAN



### KEY ELEVATION



### DISCLAIMER:

All measurements are indicative and are for marketing purposes only. All efforts have been made to ensure their accuracy, however these layouts are subject to change at the discretion of the developer and should not be relied upon as final. The actual area may vary from the stated area and the developer reserves the right to make the revisions/alterations, at its absolute discretion, without any liability whatsoever.



**THE BEACH HOUSE**  
At Al Marjan



### UNIT - 510

STUDIO

LEVEL-05

Internal Living Area	542.39 sq.ft.
Outdoor Living Area	60.92 sq.ft.
<b>Total Living Area</b>	<b>603.32 sq.ft.</b>

### KEY PLAN



### KEY ELEVATION



#### DISCLAIMER:

All measurements are indicative and are for marketing purposes only. All efforts have been made to ensure their accuracy, however these layouts are subject to change at the discretion of the developer and should not be relied upon as final. The actual area may vary from the stated area and the developer reserves the right to make the revisions/alterations, at its absolute discretion, without any liability whatsoever





**THE BEACH HOUSE**  
At Al Marjan



### UNIT- 511

1 BEDROOM

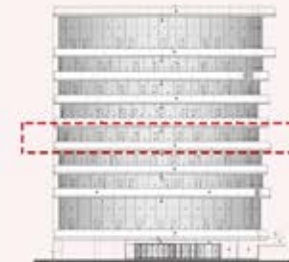
LEVEL-05

Internal Living Area	897.39 sq.ft.
Outdoor Living Area	118.73 sq.ft.
<b>Total Living Area</b>	<b>1016.11 sq.ft.</b>

### KEY PLAN



### KEY ELEVATION



#### DISCLAIMER:

All measurements are indicative and are for marketing purposes only. All efforts have been made to ensure their accuracy, however these layouts are subject to change at the discretion of the developer and should not be relied upon as final. The actual area may vary from the stated area and the developer reserves the right to make the revisions/alterations, at its absolute discretion, without any liability whatsoever.

A modern, minimalist bedroom with a large bed, a round armchair, and a large window overlooking a body of water and a city skyline. The room features a neutral color palette of beige, white, and light brown. The bed is dressed in white linens with a patterned throw. A round, tufted armchair sits near the window. The window provides a panoramic view of a waterfront city. The ceiling has recessed lighting, and the wall behind the bed is decorated with a circular pattern of small, raised elements.

# Level 6



**THE BEACH HOUSE**  
At Al Marjan



### UNIT - 601

STUDIO

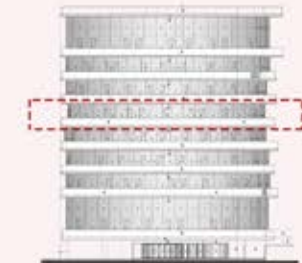
LEVEL-06

Internal Living Area	433.79 sq.ft.
Outdoor Living Area	73.63 sq.ft.
<b>Total Living Area</b>	<b>507.41 sq.ft.</b>

### KEY PLAN



### KEY ELEVATION



#### DISCLAIMER:

All measurements are indicative and are for marketing purposes only. All efforts have been made to ensure their accuracy, however these layouts are subject to change at the discretion of the developer and should not be relied upon as final. The actual area may vary from the stated area and the developer reserves the right to make the revisions/alterations, at its absolute discretion, without any liability whatsoever



**THE BEACH HOUSE**  
At Al Marjan



### UNIT - 602

STUDIO

LEVEL-06

Internal Living Area	498.69 sq.ft.
Outdoor Living Area	53.07 sq.ft.
<b>Total Living Area</b>	<b>551.76 sq.ft.</b>

### KEY PLAN



### KEY ELEVATION



#### DISCLAIMER:

All measurements are indicative and are for marketing purposes only. All efforts have been made to ensure their accuracy, however these layouts are subject to change at the discretion of the developer and should not be relied upon as final. The actual area may vary from the stated area and the developer reserves the right to make the revisions/alterations, at its absolute discretion, without any liability whatsoever



**THE BEACH HOUSE**  
At Al Marjan



### UNIT - 603

1 BEDROOM

LEVEL-06

Internal Living Area	1030.54 sq.ft.
Outdoor Living Area	424.31 sq.ft.
<b>Total Living Area</b>	<b>1454.85 sq.ft.</b>

### KEY PLAN



### KEY ELEVATION



#### DISCLAIMER:

All measurements are indicative and are for marketing purposes only. All efforts have been made to ensure their accuracy, however these layouts are subject to change at the discretion of the developer and should not be relied upon as final. The actual area may vary from the stated area and the developer reserves the right to make the revisions/alterations, at its absolute discretion, without any liability whatsoever



**THE BEACH HOUSE**  
At Al Marjan



### UNIT - 604

2 BEDROOM

LEVEL-06

Internal Living Area	1403.51 sq.ft.
Outdoor Living Area	427.43 sq.ft.
<b>Total Living Area</b>	<b>1830.94 sq.ft.</b>

### KEY PLAN



### KEY ELEVATION



#### DISCLAIMER:

All measurements are indicative and are for marketing purposes only. All efforts have been made to ensure their accuracy, however these layouts are subject to change at the discretion of the developer and should not be relied upon as final. The actual area may vary from the stated area and the developer reserves the right to make the revisions/alterations, at its absolute discretion, without any liability whatsoever



**THE BEACH HOUSE**  
At Al Marjan



### UNIT - 605

STUDIO

LEVEL-06

Internal Living Area	553.37 sq.ft.
Outdoor Living Area	73.52 sq.ft.
<b>Total Living Area</b>	<b>626.89 sq.ft.</b>



### KEY PLAN



### KEY ELEVATION



#### DISCLAIMER:

All measurements are indicative and are for marketing purposes only. All efforts have been made to ensure their accuracy, however these layouts are subject to change at the discretion of the developer and should not be relied upon as final. The actual area may vary from the stated area and the developer reserves the right to make the revisions/alterations, at its absolute discretion, without any liability whatsoever



**THE BEACH HOUSE**  
At Al Marjan



### UNIT - 606

1 BEDROOM

LEVEL-06

Internal Living Area	989.20 sq.ft.
Outdoor Living Area	265.44 sq.ft.
<b>Total Living Area</b>	<b>1254.64 sq.ft.</b>

### KEY PLAN



### KEY ELEVATION



#### DISCLAIMER:

All measurements are indicative and are for marketing purposes only. All efforts have been made to ensure their accuracy, however these layouts are subject to change at the discretion of the developer and should not be relied upon as final. The actual area may vary from the stated area and the developer reserves the right to make the revisions/alterations, at its absolute discretion, without any liability whatsoever





**THE BEACH HOUSE**  
At Al Marjan



### UNIT - 607

STUDIO

LEVEL-06

Internal Living Area	507.52 sq.ft.
Outdoor Living Area	105.27 sq.ft.
<b>Total Living Area</b>	<b>612.79 sq.ft.</b>

### KEY PLAN



### KEY ELEVATION



#### DISCLAIMER:

All measurements are indicative and are for marketing purposes only. All efforts have been made to ensure their accuracy, however these layouts are subject to change at the discretion of the developer and should not be relied upon as final. The actual area may vary from the stated area and the developer reserves the right to make the revisions/alterations, at its absolute discretion, without any liability whatsoever



**THE BEACH HOUSE**  
At Al Marjan



### UNIT - 608

1 BEDROOM

LEVEL-06

Internal Living Area	955.84 sq.ft.
Outdoor Living Area	444.33 sq.ft.
<b>Total Living Area</b>	<b>1400.17 sq.ft.</b>

### KEY PLAN



### KEY ELEVATION



### DISCLAIMER:

All measurements are indicative and are for marketing purposes only. All efforts have been made to ensure their accuracy, however these layouts are subject to change at the discretion of the developer and should not be relied upon as final. The actual area may vary from the stated area and the developer reserves the right to make the revisions/alterations, at its absolute discretion, without any liability whatsoever



**THE BEACH HOUSE**  
At Al Marjan



### UNIT - 609

1 BEDROOM

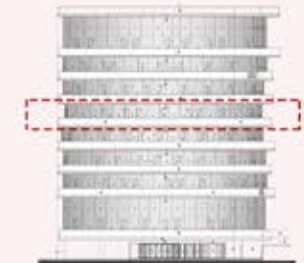
LEVEL-06

Internal Living Area	1038.29 sq.ft.
Outdoor Living Area	224.32 sq.ft.
<b>Total Living Area</b>	<b>1262.61 sq.ft.</b>

### KEY PLAN



### KEY ELEVATION



### DISCLAIMER:

All measurements are indicative and are for marketing purposes only. All efforts have been made to ensure their accuracy, however these layouts are subject to change at the discretion of the developer and should not be relied upon as final. The actual area may vary from the stated area and the developer reserves the right to make the revisions/alterations, at its absolute discretion, without any liability whatsoever



**THE BEACH HOUSE**  
At Al Marjan



### UNIT - 610

STUDIO

LEVEL-06

Internal Living Area	513.33	sq.ft.
Outdoor Living Area	64.37	sq.ft.
Total Living Area	577.70	sq.ft.

### KEY PLAN



### KEY ELEVATION



#### DISCLAIMER:

All measurements are indicative and are for marketing purposes only. All efforts have been made to ensure their accuracy, however these layouts are subject to change at the discretion of the developer and should not be relied upon as final. The actual area may vary from the stated area and the developer reserves the right to make the revisions/alterations, at its absolute discretion, without any liability whatsoever



**THE BEACH HOUSE**  
At Al Marjan



### UNIT - 611

1 BEDROOM

LEVEL-06

Internal Living Area	850.03 sq.ft.
Outdoor Living Area	147.79 sq.ft.
<b>Total Living Area</b>	<b>997.81 sq.ft.</b>

### KEY PLAN



### KEY ELEVATION



#### DISCLAIMER:

All measurements are indicative and are for marketing purposes only. All efforts have been made to ensure their accuracy, however these layouts are subject to change at the discretion of the developer and should not be relied upon as final. The actual area may vary from the stated area and the developer reserves the right to make the revisions/alterations, at its absolute discretion, without any liability whatsoever



# Level 7



**THE BEACH HOUSE**  
At Al Marjan



### UNIT - 701

STUDIO

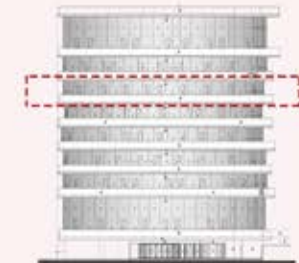
LEVEL-07

Internal Living Area	433.79 sq.ft.
Outdoor Living Area	71.26 sq.ft.
<b>Total Living Area</b>	<b>505.04 sq.ft.</b>

### KEY PLAN



### KEY ELEVATION



#### DISCLAIMER:

All measurements are indicative and are for marketing purposes only. All efforts have been made to ensure their accuracy, however these layouts are subject to change at the discretion of the developer and should not be relied upon as final. The actual area may vary from the stated area and the developer reserves the right to make the revisions/alterations, at its absolute discretion, without any liability whatsoever



**THE BEACH HOUSE**  
At Al Marjan



### UNIT - 702

STUDIO

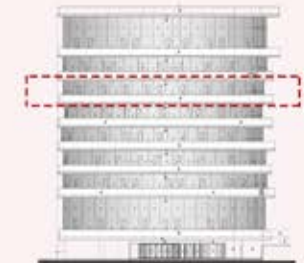
LEVEL-07

Internal Living Area	458.87 sq.ft.
Outdoor Living Area	80.94 sq.ft.
<b>Total Living Area</b>	<b>539.81 sq.ft.</b>

### KEY PLAN



### KEY ELEVATION



#### DISCLAIMER:

All measurements are indicative and are for marketing purposes only. All efforts have been made to ensure their accuracy, however these layouts are subject to change at the discretion of the developer and should not be relied upon as final. The actual area may vary from the stated area and the developer reserves the right to make the revisions/alterations, at its absolute discretion, without any liability whatsoever





**THE BEACH HOUSE**  
At Al Marjan



### UNIT - 703

1 BEDROOM

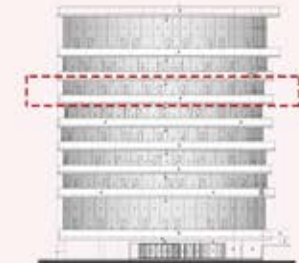
LEVEL-07

Internal Living Area	1055.51 sq.ft.
Outdoor Living Area	369.96 sq.ft.
<b>Total Living Area</b>	<b>1425.46 sq.ft.</b>

### KEY PLAN



### KEY ELEVATION



#### DISCLAIMER:

All measurements are indicative and are for marketing purposes only. All efforts have been made to ensure their accuracy, however these layouts are subject to change at the discretion of the developer and should not be relied upon as final. The actual area may vary from the stated area and the developer reserves the right to make the revisions/alterations, at its absolute discretion, without any liability whatsoever



**THE BEACH HOUSE**  
At Al Marjan



### UNIT - 704

2 BEDROOM

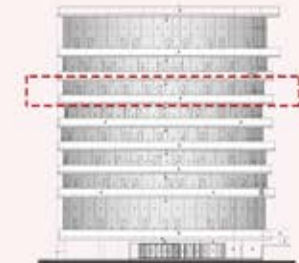
LEVEL-07

Internal Living Area	1414.70 sq.ft.
Outdoor Living Area	389.55 sq.ft.
<b>Total Living Area</b>	<b>1804.25 sq.ft.</b>

### KEY PLAN



### KEY ELEVATION



### DISCLAIMER:

All measurements are indicative and are for marketing purposes only. All efforts have been made to ensure their accuracy, however these layouts are subject to change at the discretion of the developer and should not be relied upon as final. The actual area may vary from the stated area and the developer reserves the right to make the revisions/alterations, at its absolute discretion, without any liability whatsoever



**THE BEACH HOUSE**  
At Al Marjan



### UNIT - 705

STUDIO

LEVEL-07

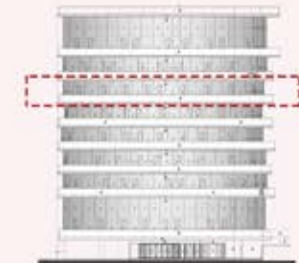
Internal Living Area	510.32 sq.ft.
Outdoor Living Area	113.13 sq.ft.
<b>Total Living Area</b>	<b>623.45 sq.ft.</b>



### KEY PLAN



### KEY ELEVATION



#### DISCLAIMER:

All measurements are indicative and are for marketing purposes only. All efforts have been made to ensure their accuracy, however these layouts are subject to change at the discretion of the developer and should not be relied upon as final. The actual area may vary from the stated area and the developer reserves the right to make the revisions/alterations, at its absolute discretion, without any liability whatsoever



**THE BEACH HOUSE**  
At Al Marjan



### UNIT - 706

1 BEDROOM

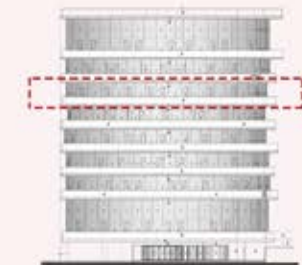
LEVEL-07

Internal Living Area	1139.68 sq.ft.
Outdoor Living Area	166.52 sq.ft.
<b>Total Living Area</b>	<b>1306.20 sq.ft.</b>

### KEY PLAN



### KEY ELEVATION



#### DISCLAIMER:

All measurements are indicative and are for marketing purposes only. All efforts have been made to ensure their accuracy, however these layouts are subject to change at the discretion of the developer and should not be relied upon as final. The actual area may vary from the stated area and the developer reserves the right to make the revisions/alterations, at its absolute discretion, without any liability whatsoever



**THE BEACH HOUSE**  
At Al Marjan



### UNIT - 707

STUDIO

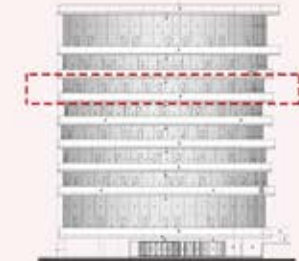
LEVEL-07

Internal Living Area	575.55 sq.ft.
Outdoor Living Area	72.76 sq.ft.
<b>Total Living Area</b>	<b>648.31 sq.ft.</b>

### KEY PLAN



### KEY ELEVATION



#### DISCLAIMER:

All measurements are indicative and are for marketing purposes only. All efforts have been made to ensure their accuracy, however these layouts are subject to change at the discretion of the developer and should not be relied upon as final. The actual area may vary from the stated area and the developer reserves the right to make the revisions/alterations, at its absolute discretion, without any liability whatsoever



**THE BEACH HOUSE**  
At Al Marjan



### UNIT - 708

1 BEDROOM

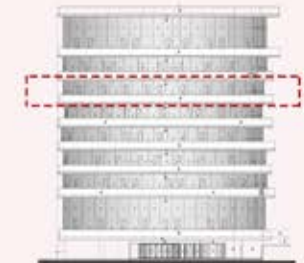
LEVEL-07

Internal Living Area	1160.78 sq.ft.
Outdoor Living Area	300.10 sq.ft.
<b>Total Living Area</b>	<b>1460.88 sq.ft.</b>

### KEY PLAN



### KEY ELEVATION



#### DISCLAIMER:

All measurements are indicative and are for marketing purposes only. All efforts have been made to ensure their accuracy, however these layouts are subject to change at the discretion of the developer and should not be relied upon as final. The actual area may vary from the stated area and the developer reserves the right to make the revisions/alterations, at its absolute discretion, without any liability whatsoever



**THE BEACH HOUSE**  
At Al Marjan



### UNIT - 709

1 BEDROOM

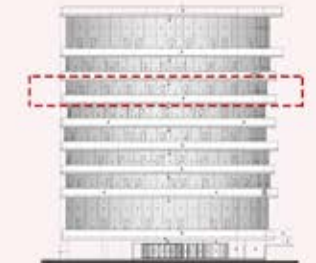
LEVEL-07

Internal Living Area	1046.47 sq.ft.
Outdoor Living Area	257.26 sq.ft.
<b>Total Living Area</b>	<b>1303.72 sq.ft.</b>

### KEY PLAN



### KEY ELEVATION



#### DISCLAIMER:

All measurements are indicative and are for marketing purposes only. All efforts have been made to ensure their accuracy, however these layouts are subject to change at the discretion of the developer and should not be relied upon as final. The actual area may vary from the stated area and the developer reserves the right to make the revisions/alterations, at its absolute discretion, without any liability whatsoever



**THE BEACH HOUSE**  
At Al Marjan



### UNIT - 710

STUDIO

LEVEL-07

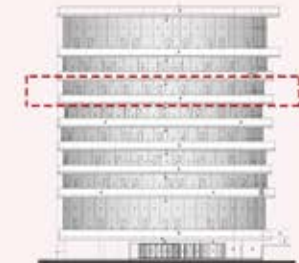
Internal Living Area	531.63 sq.ft.
Outdoor Living Area	63.72 sq.ft.
<b>Total Living Area</b>	<b>595.35 sq.ft.</b>



### KEY PLAN



### KEY ELEVATION



#### DISCLAIMER:

All measurements are indicative and are for marketing purposes only. All efforts have been made to ensure their accuracy, however these layouts are subject to change at the discretion of the developer and should not be relied upon as final. The actual area may vary from the stated area and the developer reserves the right to make the revisions/alterations, at its absolute discretion, without any liability whatsoever





**THE BEACH HOUSE**  
At Al Marjan



### UNIT - 711

1 BEDROOM

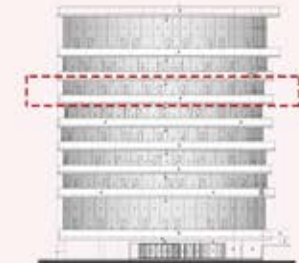
LEVEL-07

Internal Living Area	889.64 sq.ft.
Outdoor Living Area	96.55 sq.ft.
<b>Total Living Area</b>	<b>986.19 sq.ft.</b>

### KEY PLAN



### KEY ELEVATION



#### DISCLAIMER:

All measurements are indicative and are for marketing purposes only. All efforts have been made to ensure their accuracy, however these layouts are subject to change at the discretion of the developer and should not be relied upon as final. The actual area may vary from the stated area and the developer reserves the right to make the revisions/alterations, at its absolute discretion, without any liability whatsoever



Level 8



### UNIT - 801

STUDIO

LEVEL-08

Internal Living Area	457.14 sq.ft.
Outdoor Living Area	55.76 sq.ft.
<b>Total Living Area</b>	<b>512.90 sq.ft.</b>

#### KEY PLAN



#### KEY ELEVATION



#### DISCLAIMER:

All measurements are indicative and are for marketing purposes only. All efforts have been made to ensure their accuracy, however these layouts are subject to change at the discretion of the developer and should not be relied upon as final. The actual area may vary from the stated area and the developer reserves the right to make the revisions/alterations, at its absolute discretion, without any liability whatsoever



**THE BEACH HOUSE**  
At Al Marjan



### UNIT - 802

STUDIO

LEVEL-08

Internal Living Area	482.65 sq.ft.
Outdoor Living Area	70.29 sq.ft.
<b>Total Living Area</b>	<b>552.94 sq.ft.</b>



#### DISCLAIMER:

All measurements are indicative and are for marketing purposes only. All efforts have been made to ensure their accuracy, however these layouts are subject to change at the discretion of the developer and should not be relied upon as final. The actual area may vary from the stated area and the developer reserves the right to make the revisions/alterations, at its absolute discretion, without any liability whatsoever



**THE BEACH HOUSE**  
At Al Marjan



### UNIT - 803

1 BEDROOM

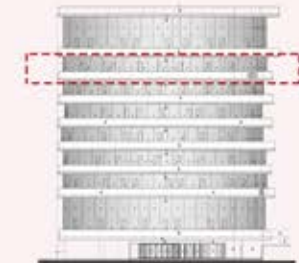
LEVEL-08

Internal Living Area	932.37 sq.ft.
Outdoor Living Area	561.12 sq.ft.
<b>Total Living Area</b>	<b>1493.49 sq.ft.</b>

### KEY PLAN



### KEY ELEVATION



#### DISCLAIMER:

All measurements are indicative and are for marketing purposes only. All efforts have been made to ensure their accuracy, however these layouts are subject to change at the discretion of the developer and should not be relied upon as final. The actual area may vary from the stated area and the developer reserves the right to make the revisions/alterations, at its absolute discretion, without any liability whatsoever



**THE BEACH HOUSE**  
At Al Marjan



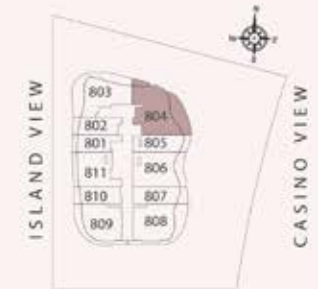
### UNIT - 804

2 BEDROOM

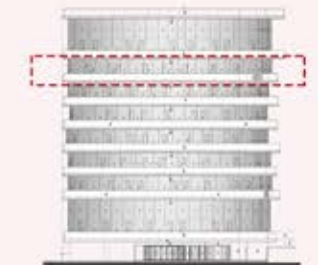
LEVEL-08

Internal Living Area	1231.71 sq.ft.
Outdoor Living Area	428.83 sq.ft.
<b>Total Living Area</b>	<b>1660.55 sq.ft.</b>

### KEY PLAN



### KEY ELEVATION



### DISCLAIMER:

All measurements are indicative and are for marketing purposes only. All efforts have been made to ensure their accuracy, however these layouts are subject to change at the discretion of the developer and should not be relied upon as final. The actual area may vary from the stated area and the developer reserves the right to make the revisions/alterations, at its absolute discretion, without any liability whatsoever



**THE BEACH HOUSE**  
At Al Marjan



### UNIT - 805

STUDIO

LEVEL-08

Internal Living Area	584.37 sq.ft.
Outdoor Living Area	80.62 sq.ft.
<b>Total Living Area</b>	<b>664.99 sq.ft.</b>



### KEY PLAN



### KEY ELEVATION



#### DISCLAIMER:

All measurements are indicative and are for marketing purposes only. All efforts have been made to ensure their accuracy, however these layouts are subject to change at the discretion of the developer and should not be relied upon as final. The actual area may vary from the stated area and the developer reserves the right to make the revisions/alterations, at its absolute discretion, without any liability whatsoever



**THE BEACH HOUSE**  
At Al Marjan



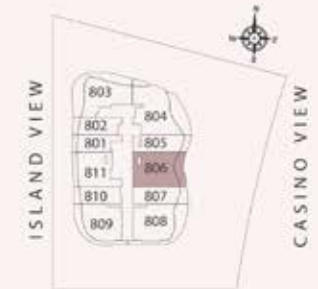
### UNIT - 806

1 BEDROOM

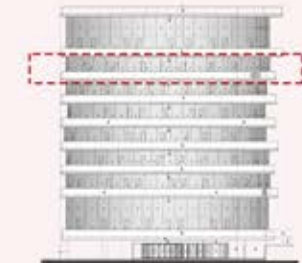
LEVEL-08

Internal Living Area	1040.33 sq.ft.
Outdoor Living Area	197.41 sq.ft.
<b>Total Living Area</b>	<b>1237.74 sq.ft.</b>

### KEY PLAN



### KEY ELEVATION



#### DISCLAIMER:

All measurements are indicative and are for marketing purposes only. All efforts have been made to ensure their accuracy, however these layouts are subject to change at the discretion of the developer and should not be relied upon as final. The actual area may vary from the stated area and the developer reserves the right to make the revisions/alterations, at its absolute discretion, without any liability whatsoever





**UNIT - 807**

STUDIO

LEVEL-08

Internal Living Area	555.31 sq.ft.
Outdoor Living Area	104.30 sq.ft.
<b>Total Living Area</b>	<b>659.61 sq.ft.</b>



**DISCLAIMER:**

All measurements are indicative and are for marketing purposes only. All efforts have been made to ensure their accuracy, however these layouts are subject to change at the discretion of the developer and should not be relied upon as final. The actual area may vary from the stated area and the developer reserves the right to make the revisions/alterations, at its absolute discretion, without any liability whatsoever



**THE BEACH HOUSE**  
At Al Marjan



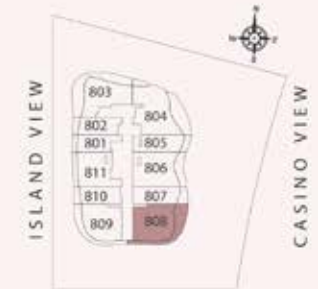
### UNIT - 808

1 BEDROOM

LEVEL-08

Internal Living Area	1019.99 sq.ft.
Outdoor Living Area	379.43 sq.ft.
<b>Total Living Area</b>	<b>1399.42 sq.ft.</b>

### KEY PLAN



### KEY ELEVATION



#### DISCLAIMER:

All measurements are indicative and are for marketing purposes only. All efforts have been made to ensure their accuracy, however these layouts are subject to change at the discretion of the developer and should not be relied upon as final. The actual area may vary from the stated area and the developer reserves the right to make the revisions/alterations, at its absolute discretion, without any liability whatsoever



**THE BEACH HOUSE**  
At Al Marjan



### UNIT - 809

1 BEDROOM

LEVEL-08

Internal Living Area	926.23 sq.ft.
Outdoor Living Area	283.41 sq.ft.
<b>Total Living Area</b>	<b>1209.65 sq.ft.</b>

### KEY PLAN



### KEY ELEVATION



#### DISCLAIMER:

All measurements are indicative and are for marketing purposes only. All efforts have been made to ensure their accuracy, however these layouts are subject to change at the discretion of the developer and should not be relied upon as final. The actual area may vary from the stated area and the developer reserves the right to make the revisions/alterations, at its absolute discretion, without any liability whatsoever



**THE BEACH HOUSE**  
At Al Marjan



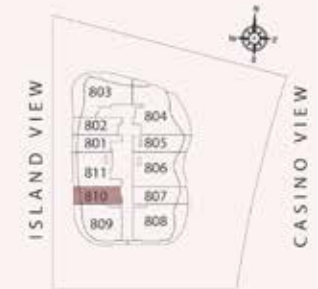
### UNIT - 810

STUDIO

LEVEL-08

Internal Living Area	492.13 sq.ft.
Outdoor Living Area	79.87 sq.ft.
<b>Total Living Area</b>	<b>571.99 sq.ft.</b>

### KEY PLAN



### KEY ELEVATION



#### DISCLAIMER:

All measurements are indicative and are for marketing purposes only. All efforts have been made to ensure their accuracy, however these layouts are subject to change at the discretion of the developer and should not be relied upon as final. The actual area may vary from the stated area and the developer reserves the right to make the revisions/alterations, at its absolute discretion, without any liability whatsoever



**THE BEACH HOUSE**  
At Al Marjan



### UNIT - 811

1 BEDROOM

LEVEL-08

Internal Living Area	859.18 sq.ft.
Outdoor Living Area	113.34 sq.ft.
<b>Total Living Area</b>	<b>972.52 sq.ft.</b>

### KEY PLAN



### KEY ELEVATION



#### DISCLAIMER:

All measurements are indicative and are for marketing purposes only. All efforts have been made to ensure their accuracy, however these layouts are subject to change at the discretion of the developer and should not be relied upon as final. The actual area may vary from the stated area and the developer reserves the right to make the revisions/alterations, at its absolute discretion, without any liability whatsoever



# Level 9



**UNIT - 901**  
**2 BEDROOM + MAID**  
LEVEL-09

Internal Living Area	1506.41 sq.ft.
Outdoor Living Area	123.46 sq.ft.
<b>Total Living Area</b>	<b>1629.87 sq.ft.</b>



**DISCLAIMER:**

All measurements are indicative and are for marketing purposes only. All efforts have been made to ensure their accuracy, however these layouts are subject to change at the discretion of the developer and should not be relied upon as final. The actual area may vary from the stated area and the developer reserves the right to make the revisions/alterations, at its absolute discretion, without any liability whatsoever



**THE BEACH HOUSE**  
At Al Marjan



UPPER FLOOR



**UNIT - 902**

**1 BEDROOM**

LEVEL-09

Internal Living Area	881.56 sq.ft.
Outdoor Living Area	73.95 sq.ft.
<b>Total Living Area</b>	<b>955.51 sq.ft.</b>



LOWER FLOOR

**DISCLAIMER:**

All measurements are indicative and are for marketing purposes only. All efforts have been made to ensure their accuracy, however these layouts are subject to change at the discretion of the developer and should not be relied upon as final. The actual area may vary from the stated area and the developer reserves the right to make the revisions/alterations, at its absolute discretion, without any liability whatsoever





**UNIT - 903**

**3 BEDROOM**

LEVEL-09

Internal Living Area	1973.89 sq.ft.
Outdoor Living Area	341.75 sq.ft.
<b>Total Living Area</b>	<b>2315.64 sq.ft.</b>



**DISCLAIMER:**

All measurements are indicative and are for marketing purposes only. All efforts have been made to ensure their accuracy, however these layouts are subject to change at the discretion of the developer and should not be relied upon as final. The actual area may vary from the stated area and the developer reserves the right to make the revisions/alterations, at its absolute discretion, without any liability whatsoever



**UPPER FLOOR**



**LOWER FLOOR**

**UNIT - 904**

**3 BEDROOM**

LEVEL-09

Internal Living Area	1609.96 sq.ft.
Outdoor Living Area	332.71 sq.ft.
<b>Total Living Area</b>	<b>1942.67 sq.ft.</b>



**DISCLAIMER:**

All measurements are indicative and are for marketing purposes only. All efforts have been made to ensure their accuracy, however these layouts are subject to change at the discretion of the developer and should not be relied upon as final. The actual area may vary from the stated area and the developer reserves the right to make the revisions/alterations, at its absolute discretion, without any liability whatsoever



**UPPER FLOOR**



**UNIT - 905**  
**2 BEDROOM**  
LEVEL-09

Internal Living Area	1761.41 sq.ft.
Outdoor Living Area	237.56 sq.ft.
<b>Total Living Area</b>	<b>1998.97 sq.ft.</b>



**LOWER FLOOR**

**DISCLAIMER:**

All measurements are indicative and are for marketing purposes only. All efforts have been made to ensure their accuracy, however these layouts are subject to change at the discretion of the developer and should not be relied upon as final. The actual area may vary from the stated area and the developer reserves the right to make the revisions/alterations, at its absolute discretion, without any liability whatsoever



UPPER FLOOR



**UNIT - 906**

**2 BEDROOM + MAID**

**LEVEL-09**

---

Internal Living Area	1593.17 sq.ft.
Outdoor Living Area	310.86 sq.ft.
<b>Total Living Area</b>	<b>1904.03 sq.ft.</b>



LOWER FLOOR

**DISCLAIMER:**

All measurements are indicative and are for marketing purposes only. All efforts have been made to ensure their accuracy, however these layouts are subject to change at the discretion of the developer and should not be relied upon as final. The actual area may vary from the stated area and the developer reserves the right to make the revisions/alterations, at its absolute discretion, without any liability whatsoever



**THE BEACH HOUSE**  
At Al Marjan



UPPER FLOOR



**UNIT - 907**

**1 BEDROOM**

LEVEL-09

Internal Living Area	811.60 sq.ft.
Outdoor Living Area	124.32 sq.ft.
<b>Total Living Area</b>	<b>935.92 sq.ft.</b>



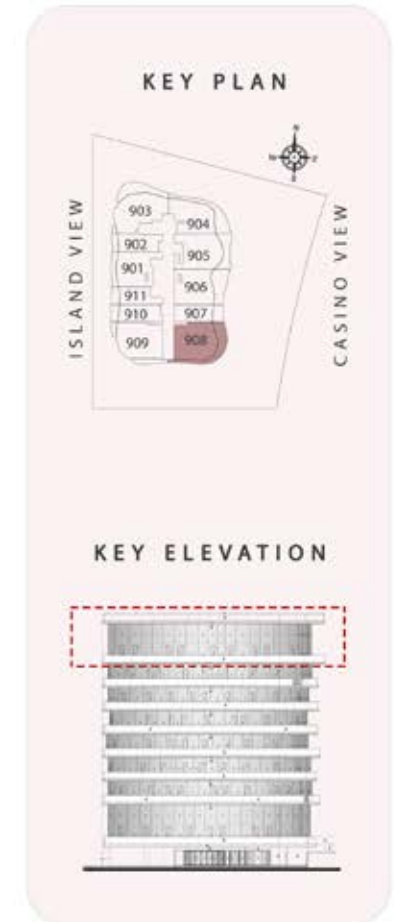
LOWER FLOOR

**DISCLAIMER:**

All measurements are indicative and are for marketing purposes only. All efforts have been made to ensure their accuracy, however these layouts are subject to change at the discretion of the developer and should not be relied upon as final. The actual area may vary from the stated area and the developer reserves the right to make the revisions/alterations, at its absolute discretion, without any liability whatsoever



UPPER FLOOR



LOWER FLOOR

**UNIT - 908**

**3 BEDROOM**

LEVEL-09

Internal Living Area	1866.78q.ft.
Outdoor Living Area	356.72q.ft.
<b>Total Living Area</b>	<b>2223.50q.ft.</b>



**DISCLAIMER:**

All measurements are indicative and are for marketing purposes only. All efforts have been made to ensure their accuracy, however these layouts are subject to change at the discretion of the developer and should not be relied upon as final. The actual area may vary from the stated area and the developer reserves the right to make the revisions/alterations, at its absolute discretion, without any liability whatsoever



**UPPER FLOOR**



**UNIT - 909**

**3 BEDROOM**

**LEVEL-09**

---

Internal Living Area	1940.30 sq.ft.
Outdoor Living Area	162.86 sq.ft.
<b>Total Living Area</b>	<b>2103.16 sq.ft.</b>



**LOWER FLOOR**

**DISCLAIMER:**

All measurements are indicative and are for marketing purposes only. All efforts have been made to ensure their accuracy, however these layouts are subject to change at the discretion of the developer and should not be relied upon as final. The actual area may vary from the stated area and the developer reserves the right to make the revisions/alterations, at its absolute discretion, without any liability whatsoever



**THE BEACH HOUSE**  
At Al Marjan



UPPER FLOOR



LOWER FLOOR

**UNIT - 910**

**1 BEDROOM**

**LEVEL-09**

Internal Living Area	900.29 sq.ft.
Outdoor Living Area	87.62 sq.ft.
<b>Total Living Area</b>	<b>987.91 sq.ft.</b>

**DISCLAIMER:**

All measurements are indicative and are for marketing purposes only. All efforts have been made to ensure their accuracy, however these layouts are subject to change at the discretion of the developer and should not be relied upon as final. The actual area may vary from the stated area and the developer reserves the right to make the revisions/alterations, at its absolute discretion, without any liability whatsoever





**THE BEACH HOUSE**  
At Al Marjan



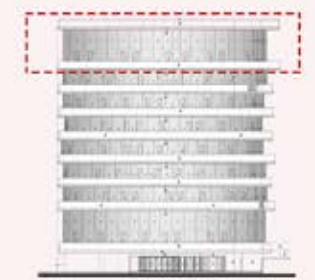
UPPER FLOOR



**KEY PLAN**



**KEY ELEVATION**



LOWER FLOOR

**UNIT - 911**

**1 BEDROOM**

**LEVEL-09**

Internal Living Area	771.34 sq.ft.
Outdoor Living Area	93.00 sq.ft.
<b>Total Living Area</b>	<b>864.34 sq.ft.</b>

**DISCLAIMER:**

All measurements are indicative and are for marketing purposes only. All efforts have been made to ensure their accuracy, however these layouts are subject to change at the discretion of the developer and should not be relied upon as final. The actual area may vary from the stated area and the developer reserves the right to make the revisions/alterations, at its absolute discretion, without any liability whatsoever



# CONTACT

+971 4 325 3447

[info@rangerak.ae](mailto:info@rangerak.ae)    [www.rangerak.ae](http://www.rangerak.ae)

Boulevard Plaza, Tower 2, office 1104, Burj Khalifa  
Community, Downtown, P.O. Box 50390,  
Dubai, United Arab Emirates